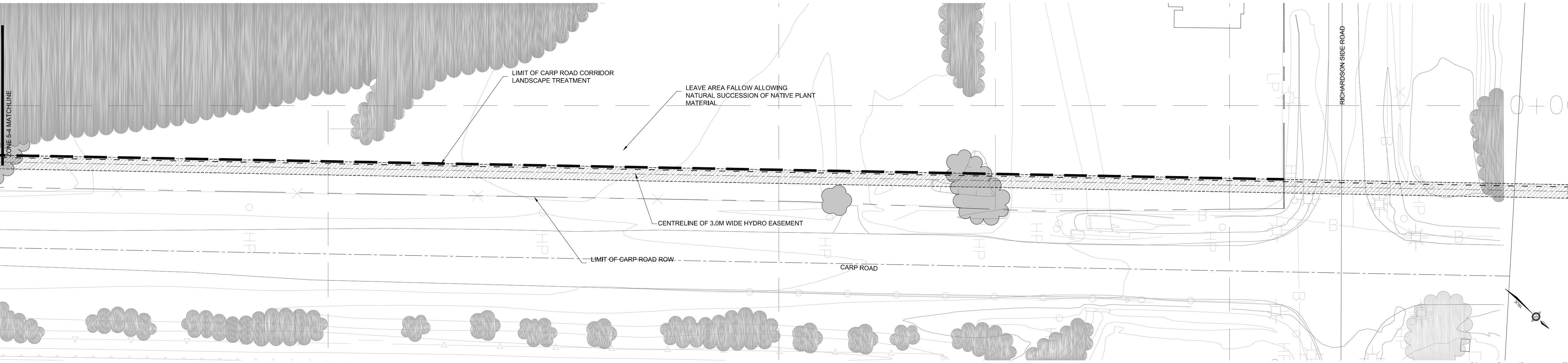
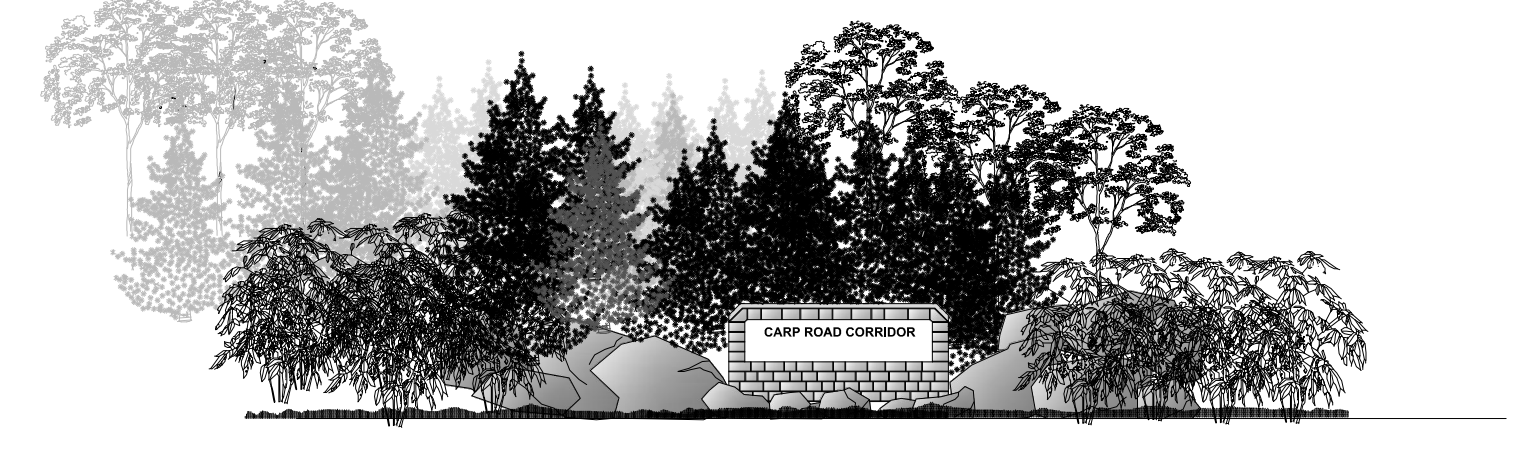
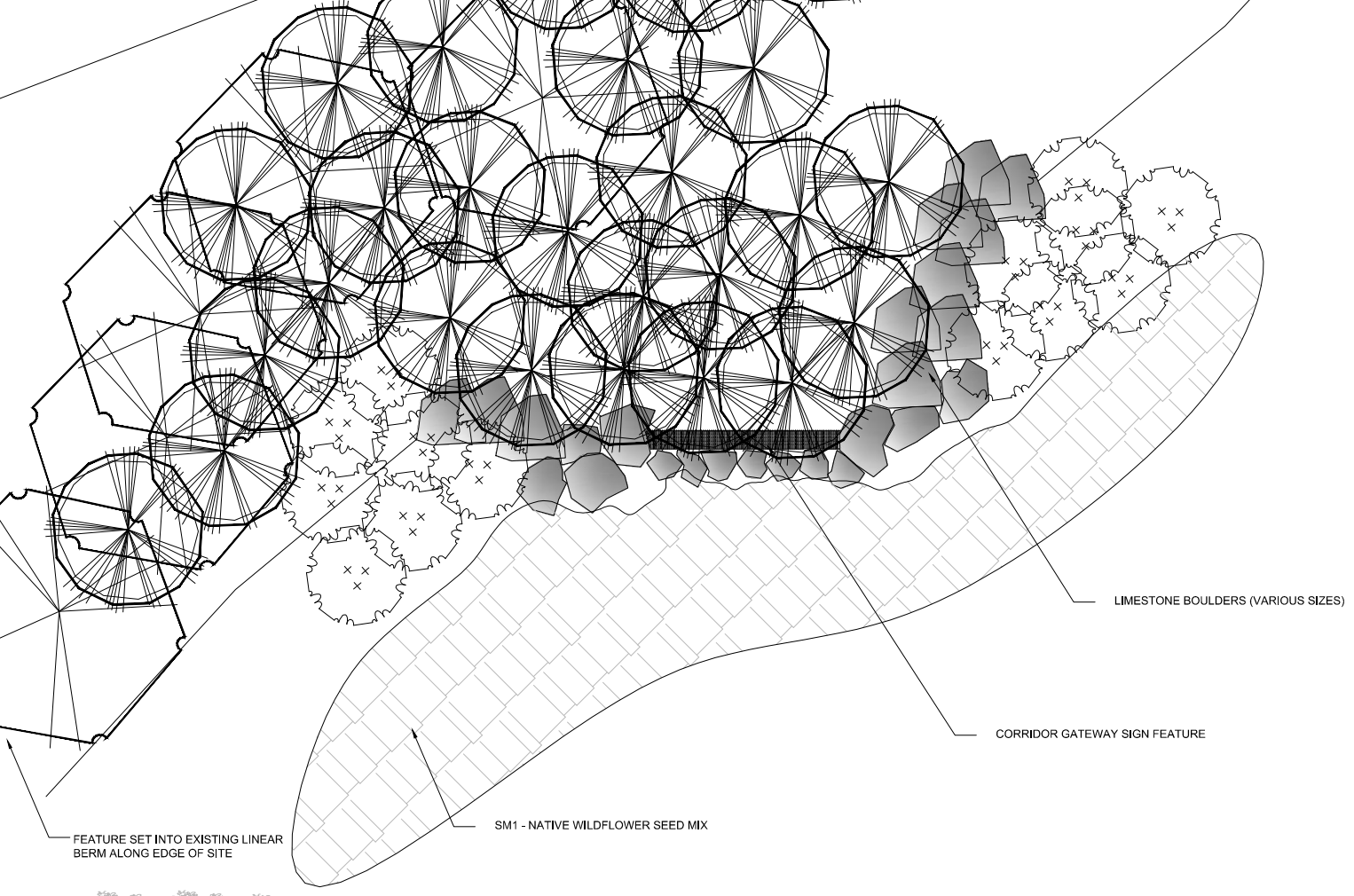


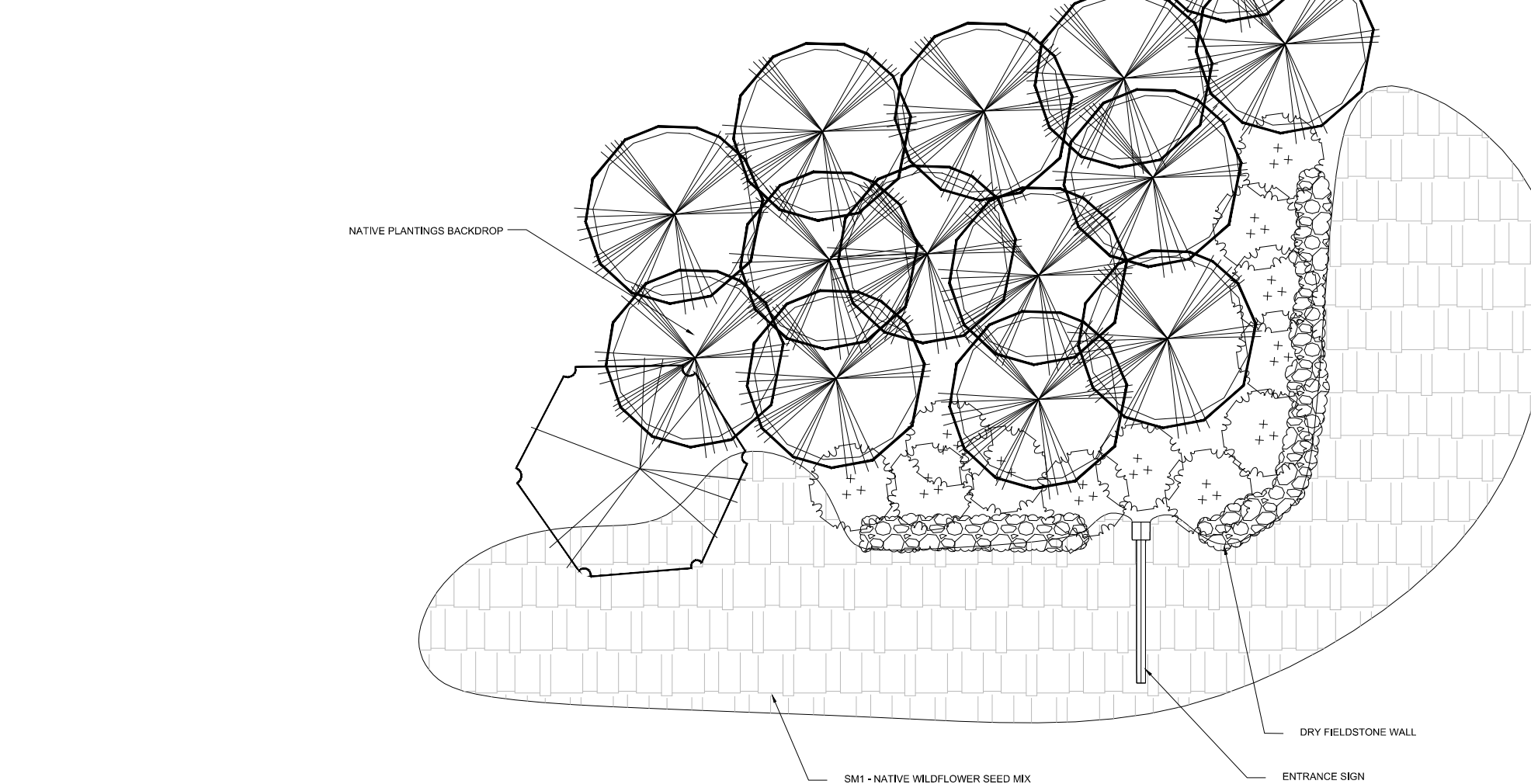
ZONE 5-4 CARP ROAD CORRIDOR



ZONE 5-5 CARP ROAD CORRIDOR



CARP ROAD CORRIDOR GATEWAY DESIGN ENLARGEMENT



WCEC ENTRANCE SIGNAGE DESIGN ENLARGEMENT

**PLANT LIST - ZONE 5 - CARP ROAD CORRIDOR LANDSCAPE**

ID Key	Botanical Name	Common Name	Size	Qty.	Remarks
<b>Trees</b>					
Ab	Abies balsamea	Balsam Fir	1.2m Ht., WB	34	Straight trunk, full, well branched, bushy symmetrical form
Ar	Acer rubrum	Native Red Maple	250cm Ht., BB	33	Straight trunk, well developed side branching, symmetrical form
As	Acer saccharum	Sugar Maple	250cm Ht., BB	22	Straight trunk, well developed side branching, symmetrical form
Pg	Picea glauca	White Spruce	1.2m Ht., WB	63	Straight trunk, full, well branched, bushy symmetrical form
Ps	Pinus strobus	Eastern White Pine	1.2m Ht., WB	57	Straight trunk, full, well branched, bushy symmetrical form
Qr	Quercus rubra	Red Oak	250cm Ht., BB	20	Straight trunk, well developed side branching, symmetrical form
Ta	Tilia americana	American Basswood	250cm Ht., BB	2	Straight trunk, well developed side branching, symmetrical form
Note: Deciduous tree trunk size to be 40mm Cal. min. (field grown stock)					
<b>Shrubs</b>					
A1	Ailnus incana	Speckled Alder	1.0m Ht., Potted	52	Well branched, bushy form, min. 5 canes
Pse	Prunus serotina	Black Cherry	1.0m Ht., Potted	7	Well branched, bushy form, min. 3 canes
Pv	Prunus virginiana	Choke Cherry	1.0m Ht., Potted	53	Well branched, bushy form, min. 5 canes
Rt	Rhus typhina	Staghorn Sumac	1.0m Ht., Potted	25	Well branched, bushy form
Sc	Sambucus canadensis	Common Elderberry	1.0m Ht., Potted	74	Well branched, bushy form, min. 5 canes
Vl	Viburnum lentago	Nannyberry	1.0m Ht., Potted	67	Well branched, bushy form, min. 5 canes

**SEED MIXTURES**

Botanical Name	Common Name	Botanical Name	Common Name
<b>SM1 - "Wildflower Sun" (Pickseed Canada)</b>			
Gypsophila elegans	Annual Baby's Breath	Coreopsis lanceolata	Lance Leaved Coreopsis
Cheiranthus allionii	Siberian Wallflower	Coreopsis tinctoria	Perennial Gaillardia
Coreopsis lanceolata	Lance Leaf Coreopsis	Centaurea cyanus	Blue Cornflower
Gaillardia aristata	Perennial Gaillardia	Eschscholzia caespitosa	California Poppy
Centaurea cyanus	Blue Cornflower	Lathyrus odoratus	Perennial Sweet Pea
Eschscholzia caespitosa	California Poppy	Papaver rhoeas	Corn Poppy
Lathyrus odoratus	Perennial Sweet Pea	Coreopsis tinctoria	Plains Coreopsis
Papaver rhoeas	Corn Poppy	Ratibida columnifera	Prairie Coneflower
Coreopsis tinctoria	Plains Coreopsis	Achillea millefolium	White Yarrow
Ratibida columnifera	Prairie Coneflower	Nemophila menziesii	Baby Blue Eyes
Achillea millefolium	White Yarrow	Delphinium ajacis	Rocket Larkspur
Nemophila menziesii	Baby Blue Eyes	Lupinus perennis	Perennial Lupine
Delphinium ajacis	Rocket Larkspur	Linum perenne	Blue Flax
Lupinus perennis	Perennial Lupine	Calendula officinalis	Calendula
Linum perenne	Blue Flax	Liatris spicata	Gayfeather
Calendula officinalis	Calendula	Dalea purpurea	Purple Prairie Clover
Liatris spicata	Gayfeather	Linaria moroccana	Spurred Snapdragon
Dalea purpurea	Purple Prairie Clover	Papaver nudicaule	Iceland Poppy
Linaria moroccana	Spurred Snapdragon	Rudbeckia hirta	Black-Eyed Susan
Papaver nudicaule	Iceland Poppy		
Rudbeckia hirta	Black-Eyed Susan		
Seeding Rate: 28 kg/hectar (25 lbs/acre) Spot Application: 1 kg/100m <sup>2</sup> (2.25 lbs/1000 ft <sup>2</sup> )			
<b>SM2 - "Butterfly Hummingbird" (Pickseed Canada)</b>			
Schizanthus scapularium	Little Bluestem	Papaver rhoeas	Corn poppy/Shirley Mix
Coreopsis lanceolata	Lance Leaved Coreopsis	Coreopsis tinctoria	Lance Leaved Coreopsis
Coreopsis tinctoria	Perennial Gaillardia	Cosmos bipinnatus	Plains Coreopsis
Cosmos bipinnatus	Plains Coreopsis	Dianthus barbatus	Sweet William
Dianthus barbatus	Sweet William	Silene armeria	Catchfly
Silene armeria	Catchfly	Lupinus polyphyllus	Bigleaf Aster
Lupinus polyphyllus	Bigleaf Aster	Sorghastrum nutans	Indiangrass
Sorghastrum nutans	Indiangrass	Delphinium ajacis	Rocket Larkspur
Delphinium ajacis	Rocket Larkspur	Echinacea purpurea	Purple Coneflower
Echinacea purpurea	Purple Coneflower	Rudbeckia hirta	Black Eyed Susan
Rudbeckia hirta	Black Eyed Susan	Elymus virginicus	Virginia Wild Rye
Elymus virginicus	Virginia Wild Rye	Gaillardia aristata	Blanket Flower
Gaillardia aristata	Blanket Flower	Liatris spicata	Blazing Star
Liatris spicata	Blazing Star	Aster novae-angliae	New England Aster
Aster novae-angliae	New England Aster	Linum grandiflorum rubrum	Scarlet Flax
Linum grandiflorum rubrum	Scarlet Flax	Monarda fistulosa	Wild Bergamot
Monarda fistulosa	Wild Bergamot	Soilgado speciosa	Showy Goldenrod
Soilgado speciosa	Showy Goldenrod	Asclepias syriaca	Common Milkweed
Asclepias syriaca	Common Milkweed	Asclepias tuberosa	Butterfly Milkweed
Asclepias tuberosa	Butterfly Milkweed		
Seeding Rate: 17-25 kg/hectar (15-22 lbs/acre) Spot Application: 0.5 kg/100m <sup>2</sup> (1.10 lbs/1000 ft <sup>2</sup> )			

**PROJECT**  
West Carleton Environmental Centre  
Site Plan Approval  
Landscape Development

2349 to 2432 Carp Road  
Ottawa, ON

**CLIENT**  
**WASTE MANAGEMENT**  
2301 Carp Road  
Ottawa ON K0A 0Z8  
www.WMCanada.com

**CONSULTANT**  
AECOM Canada Ltd.  
302-1150 Morrison Drive  
Ottawa, ON  
613.820.8282 tel 613.820.8338 fax  
www.aecom.com

- LEGEND:**
- EXISTING VEGETATION TO BE PROTECTED AND MAINTAINED
  - EXISTING VEGETATION TO BE REMOVED
  - CARP ROAD RIGHT OF WAY
  - EXTENT OF CARP ROAD CORRIDOR LANDSCAPE TREATMENT
  - PROPOSED NATIVE PLANTINGS IN NATURAL ARRANGEMENTS
  - SM1 - "WILDFLOWER SUN" NATIVE SEED MIX
  - SM2 - "BUTTERFLY HUMMINGBIRD" NATIVE SEED MIX
  - AREA LEFT FALLOW
  - AREA ALLOWED TO UNDERGO NATURAL SUCCESSION
  - MATCHLINE - INFORMATION CONTINUED ON DRAWING QUOTED

**REVISION DATE**  
RE-ISSUED FOR SPA SUBMISSION 21/07/15  
RE-ISSUED FOR SPA SUBMISSION 10/08/15  
RE-ISSUED FOR SPA SUBMISSION 11/09/15  
RE-ISSUED FOR SPA SUBMISSION 01/02/17

APPROVED  REFUSED   
THIS DAY OF \_\_\_\_\_, 20\_\_\_\_  
**DERRICK MOODIE, MANAGER**  
DEVELOPMENT REVIEW, RURAL SERVICES

**PROJECT NUMBER**  
60430948

**DRAWING TITLE**  
Carp Road Corridor Landscape  
Zone 5 (Drawing 2/2)

**DRAWING DATE**  
February 2015  
**DRAWN BY:**  
A. BECKING  
**SCALE:**  
AS SHOWN

**L9**